



# VALOR™ VSI CRUSHER

V250 / V400 / V600 / V800

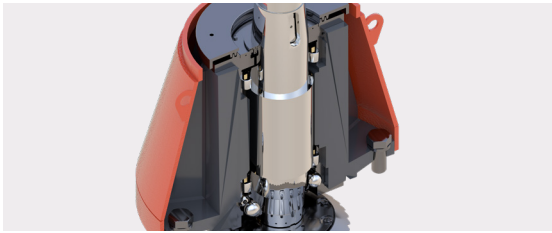
- Proudly made in America at Superior's new Pekin, Illinois plant.
- Stronger, safer and more convenient design incorporates the voice of customers.
- Backed by a service and support team committed to exceeding customer expectations.
- Substantial inventory of parts for immediate, lightning fast deliveries.

# VALOR VSI KEY ADVANTAGES



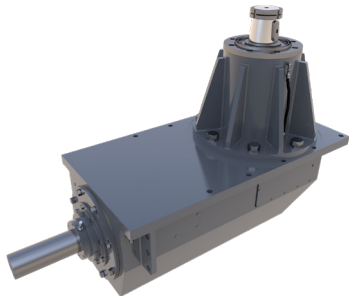
## HYDRAULIC LID LIFTER

- Safe and easy access to crushing chamber
- Automatic and manual safety interlocks
- Simple hydraulic controls
- Manual worm gear driven lid swing mechanism



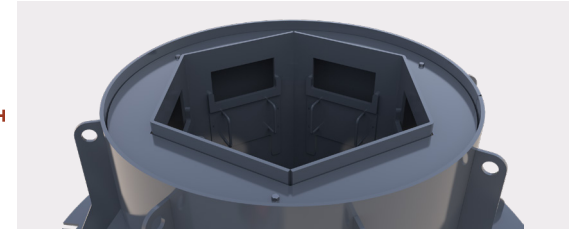
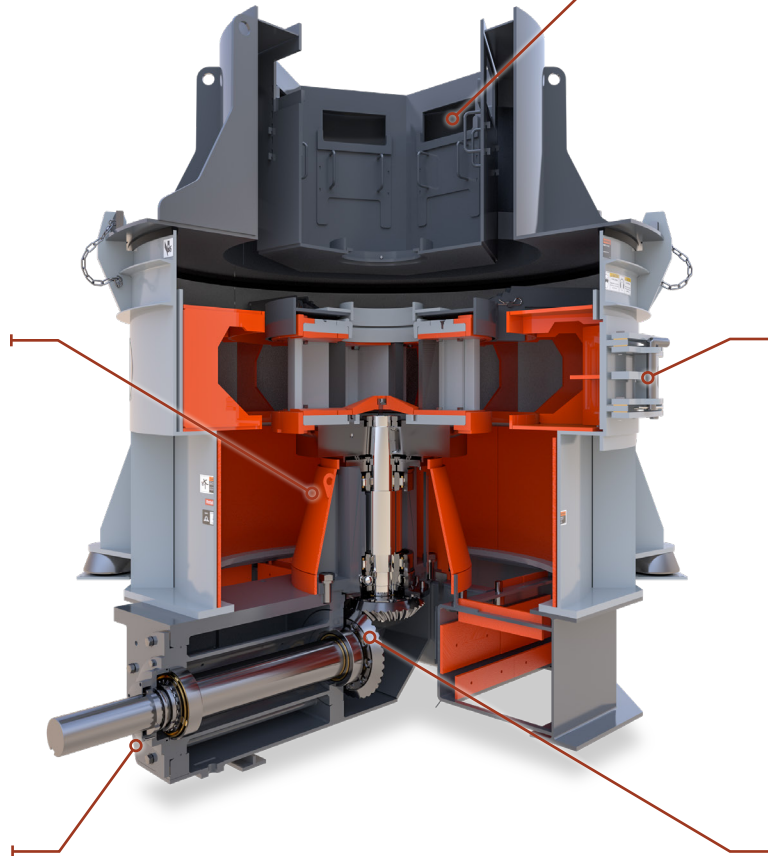
## PEDESTAL / BEARING CARTRIDGE

- Greaseless and maintenance free upper seal
- High capacity upper and lower cylindrical roller bearing
- Dedicated thrust bearing



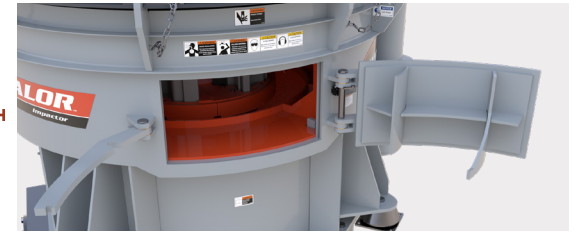
## RIGHT ANGLE PINION GEAR BOX

- Cartridge style for easy removal and maintenance
- Simplifies drive motor arrangement (deck mount)
- Safe and simple access to drive components



## BYPASS FEED (ROTOR CONFIGURATIONS ONLY)

- Decreases HP usage while increasing crusher throughput
- Capable of bypassing up to 50% feed directly into crushing chamber



## INSPECTION DOOR

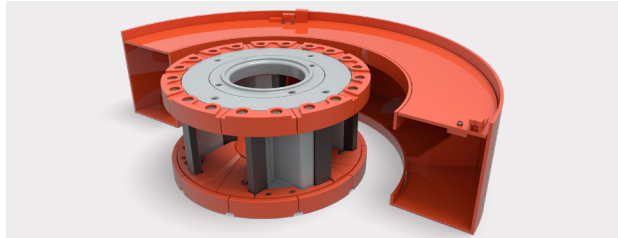
- Provides inspection access to crushing chamber
- Provides quick and safe access to the crushing chamber and reduces downtime



## SPIRAL BEVEL GEARS

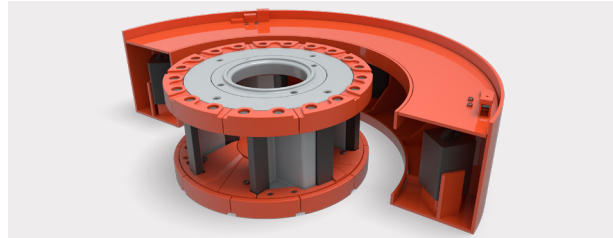
- Spiral tooth gearing engages more gradually giving an efficient transfer of horsepower.
- Proven to perform at higher speeds with less noise and vibration.

# CRUSHING CHAMBER CONFIGURATIONS



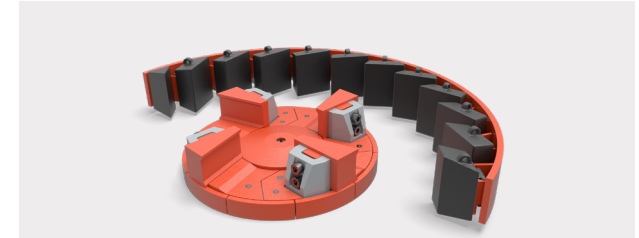
## ROCK ON ROCK

- Enclosed rotor and rock shelf
- Feed sizes to 2"
- High abrasion materials



## ROCK ON ANVIL (HYBRID ROCKBOX)

- Enclosed rotor and anvils
- Feed sizes to 3"
- Medium to high abrasion materials

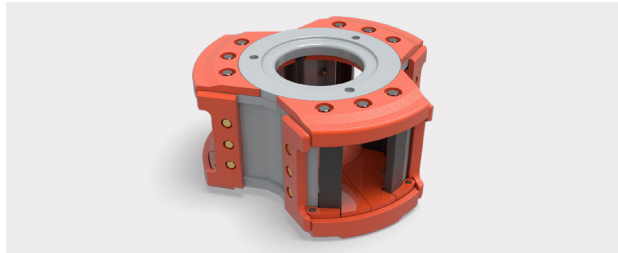


## SHOE AND ANVIL\*

- Open shoe table and anvil
- Feed sizes to up 8"
- Low to medium abrasion materials

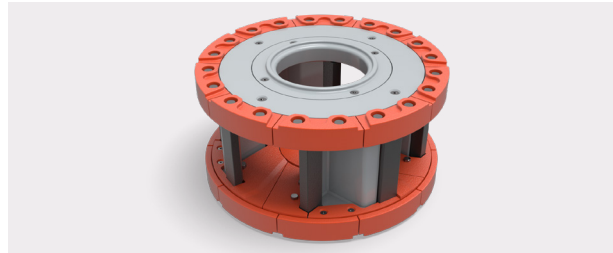
\* Requires different lid assembly

# ROTOR DESIGNS



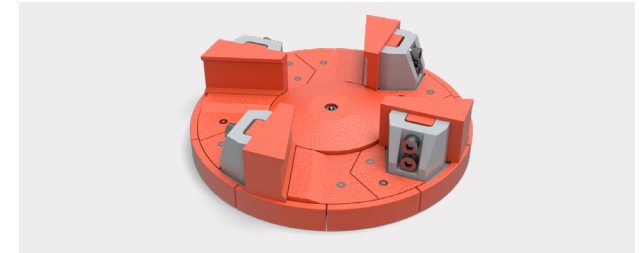
## SYMMETRY™ ROTOR

- Rotor is completely symmetrical in design
- Allows for operation in both rotation directions
- Simple electrical controls



## 4/6 PORT ROTOR

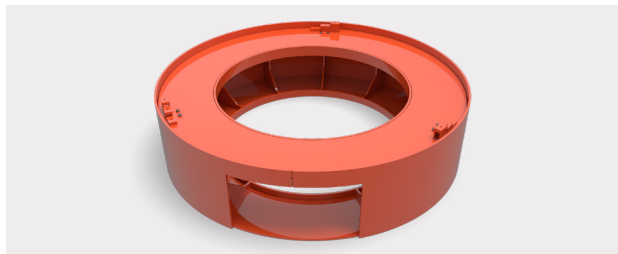
- Designed with the fewest parts possible
- Parts interchange between top and bottom
- No hardfacing required



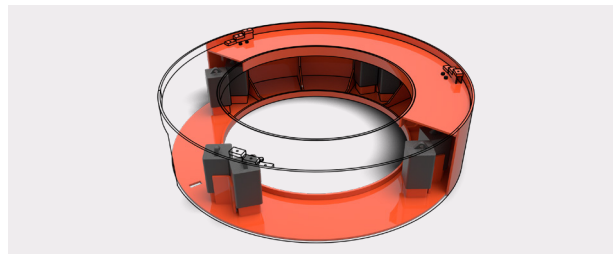
## OPEN SHOE TABLE

- 4, 5, and 6 shoes available
- 28% chrome and ceramic available
- Designed for easy maintenance

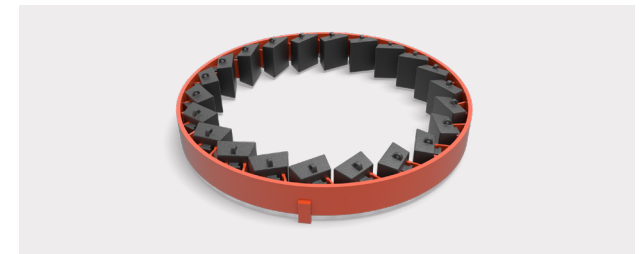
# ROCK BOX



# HYBRID ROCK BOX

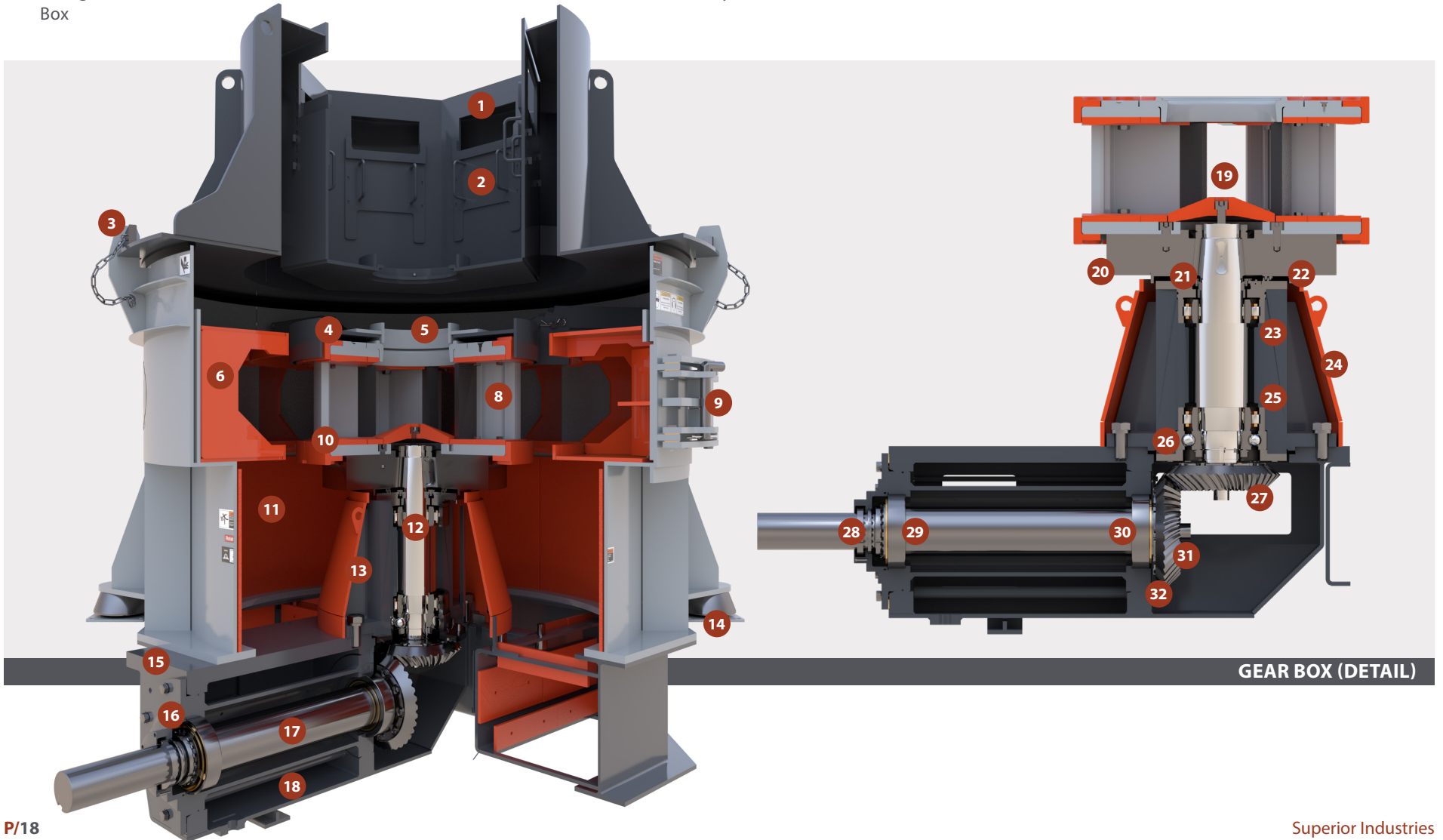


# ANVIL RING



# FEATURES

- 1/ Bypass Feed Inlet
- 2/ Adjustable Bypass Feed Doors
- 3/ Positive Lid Lock Safety Wedges
- 4/ Upper Edge Liners
- 5/ Rotor Crown Ring
- 6/ Autogenous Rock Box
- 7/ Standard Hydraulic Lid Lifter (not shown)
- 8/ 4 Port Autogenous Rotor
- 9/ Side Access Door
- 10/ Lower Edge Liner
- 11/ Single Piece Rolled AR Tub Liner
- 12/ Astralloy™ Main Shaft
- 13/ 3 Bearing Pedestal
- 14/ Vibration Isolation Mounts
- 15/ Cartridge Style, Removable Gear Box
- 16/ Tachometer Sensor
- 17/ 4340 Pinion Shaft
- 18/ Return Oil Sump
- 19/ Center Feed Plate
- 20/ Rotor Flywheel
- 21/ Greaseless Upper Main Seal
- 22/ Integral Dust and Debris Seal
- 23/ Cylindrical Roller Upper Bearing
- 24/ Pedestal Shield
- 25/ Cylindrical Roller Lower Bearing
- 26/ Dedicated Thrust Ball Bearing
- 27/ Spiral Bevel Pedestal Gear
- 28/ Tachometer Gear
- 29/ Outboard Pinion Bearing
- 30/ Inboard Pinion Bearing
- 31/ Spiral Bevel Pinion Gear
- 32/ Keyless Gear Bushing



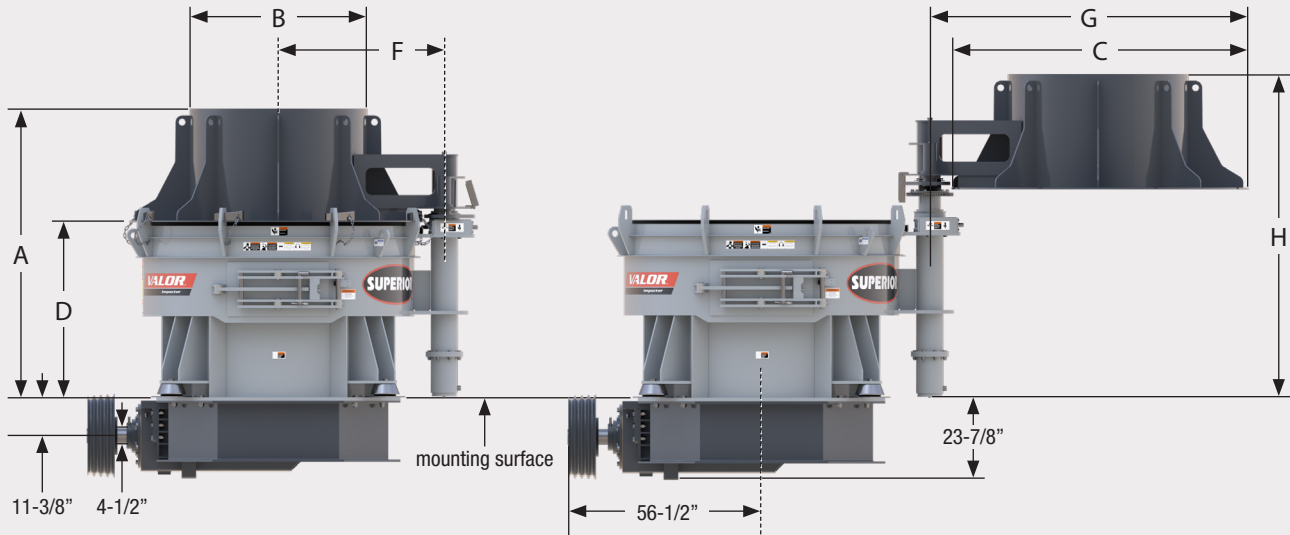
GEAR BOX (DETAIL)

# SPECIFICATIONS

VALOR VSI					
MODELS	Configuration	Max. Feed Size Inch (mm)	Table/ Rotor Dia. Inch (mm)	Est. Max. Throughput* STPH (MTPH)	Typical HP Range
<b>V250</b>	Impeller Table and Anvils	2" (50.8)	30" (762)	150 (135)	125-250
	Rotor and Anvil	1" (25.4)	27" (685)	125 (115)	125-250
	Rotor and Rockbox	1-1/2" (38.1)	27" (685)	*125 (115)	200-250
<b>V400</b>	Impeller Table and Anvils	4" (101.6)	34" (864)	250 (230)	200-400
	Rotor and Anvil	3" (76.2)	32" (813)	275 (250)	300-400
	Rotor and Rockbox	2-1/2" (63.5)	32" (813)	*275 (250)	300-400
<b>V600</b>	Impeller Table and Anvils	4" (101.6)	38" (965)	400 (360)	400-600
	Rotor and Anvil	3" (76.2)	36" (914)	350 (320)	350-600
	Rotor and Rockbox	2-1/2" (63.5)	36" (914)	*350 (320)	350-600
<b>V800</b>	Impeller Table and Anvils	8" (203.2)	42" (1,067)	600 (550)	600-800
	Rotor and Anvil	3" (76.2)	40" (1,016)	500 (450)	400-800
	Rotor and Rockbox	2-1/2" (63.5)	40" (1,016)	*500 (450)	400-800

\*No bypass feed

# SPECIFICATIONS



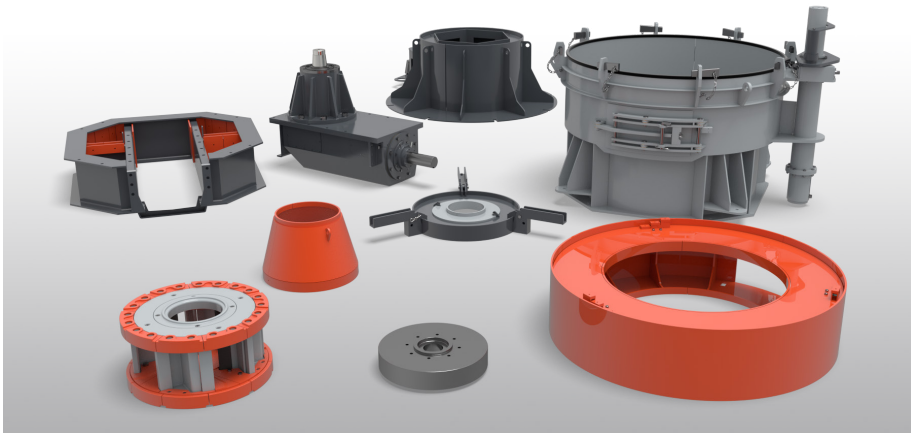
VALOR VSI				
	V250	V400	V600	V800
A	78" (1,981)	82-1/2" (2,096)	85-1/4" (2,165)	88" (2,235)
B	43" (1,902)	48-1/2" (1,232)	52-1/2" (1,334)	57" (1,448)
C	77" (1,956)	84" (2,134)	88" (2,235)	97" (2,464)
D	48" (1,219)	50" (1,270)	52-1/4" (1,327)	53-1/2" (1,359)
E	69" (1,753)	76" (1,930)	80" (2,032)	89" (2,261)
F	43-1/2" (1,105)	47" (1,194)	49" (1,245)	53-1/2" (1,359)
G	82" (2,083)	89" (2,264)	93" (2,362)	102" (2,591)
H	84" (2,134)	88" (2,248)	91-1/4" (2,318)	94" (2,388)

# WORLD-CLASS SERVICE AND SUPPORT



- Strive for a 2 hour response time from service agents.
- US-based support staff limits wait time for North American customers.
- Commitment to getting crusher operating as expected.
- Investment in smart, hard-working and industry experienced service team.
- Direct line to technical support group, 24-hours a day at **+1 (320) 589-7485**.

# QUICK DELIVERED PARTS



- Large inventory increases parts availability and reduces wait time.
- Centrally-located warehouse for quick deliveries in North America.
- Critical third party parts are inspected for integrity.
- High quality factory parts are backed by fitup assurance.
- 1-Year Parts Warranty:
  - ↳ Covers new parts against defects in material or workmanship.
  - ↳ Excludes normal wear and tear.

# WARRANTY



- We offer the industry's only 2-year product and 1-year parts' warranties, confirming our commitment to you.